

SECTION KEY NOTES:

9-1 TYPICAL ROOF CONSTRUCTION -
METAL ROOF
2 LAYERS OF 5/8" FELT
R-30 - 1" RIGID INSULATION WITH O.S.B. NAILABLE SURFACE
3/8" INTERLOCKING DOOR
TIMBER RAFTERS AND OR TRUSSES

9-2 TYPICAL FRAME WALL CONSTRUCTION -
1/2" DRYWALL
2x6 STUDS @ 16" O.C.
R-19 BATT INSULATION
1/2" PLYWOOD OR O.S.B.
TYVEK
CEDAR LAP SIDING

9-3 TYPICAL STONE VENEER WALL CONSTRUCTION -
1/2" DRYWALL
1/2" POLYURETHANE INSULATION
R-19 BATT INSULATION
1/2" PLYWOOD OR O.S.B.
TYVEK
1" AIR SPACE
4" TO 6" FIELD STONE VENEER

9-4 TYPICAL WOOD FLOOR CONSTRUCTION -
2x10 T&G WOOD FLOORING
3/4" PLYWOOD SUB-FLOOR
PRE-MANUFACTURED OPEN WEB TRUSSES
1/2" DRYWALL CEILING

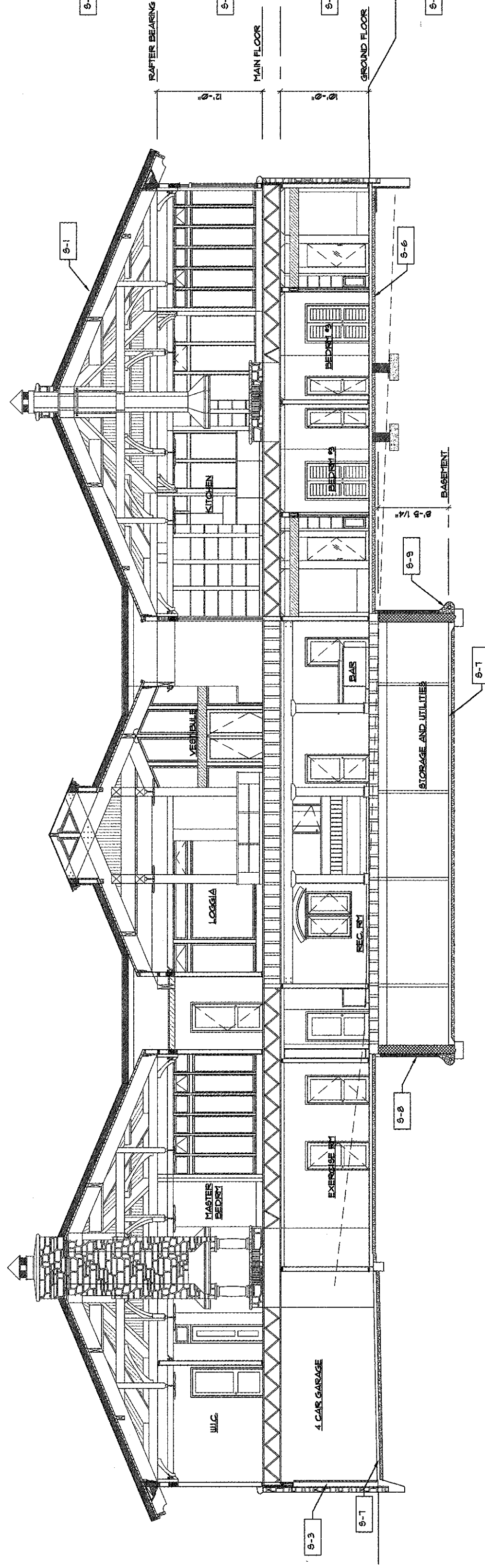
9-5 TYPICAL TILE ON FRAME CONSTRUCTION -
3/8" CERMENT BOARD
3/4" PLYWOOD SUB-FLOOR
PRE-MANUFACTURED OPEN OR SOLID WEB TRUSSES
1/2" DRYWALL

9-6 TYPICAL TILE ON SLAB -
6" MILL VAPOR BARRIER
4" GRAVEL (SEE STRUCTURAL FOR REINFORCING)

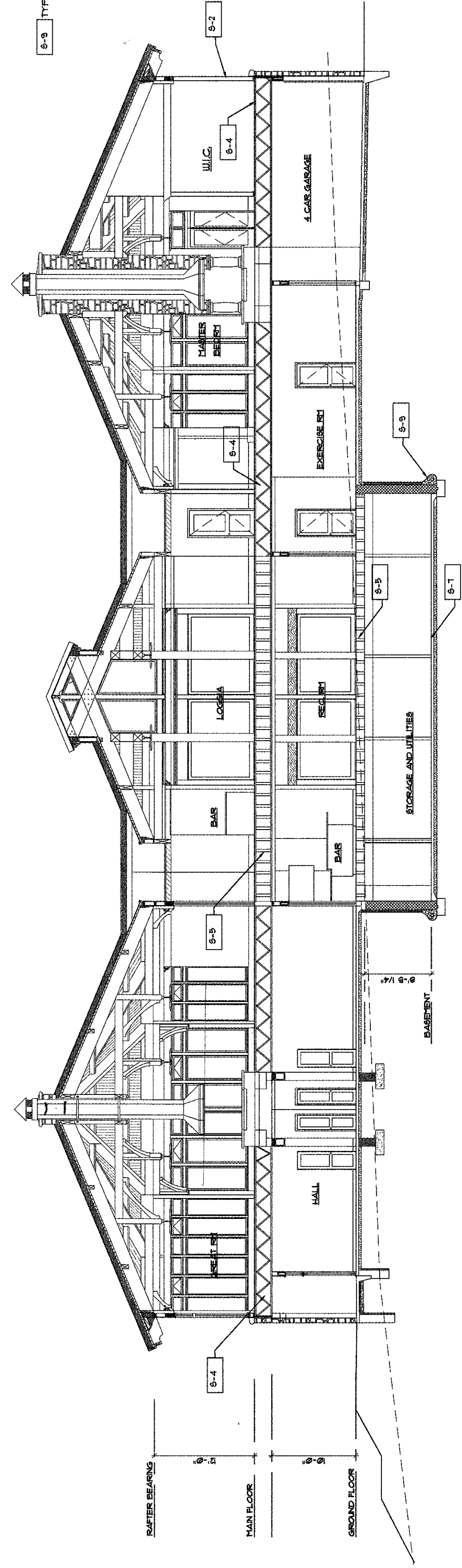
9-7 TYPICAL CONCRETE SLAB FLOOR -
4" SEALED CONCRETE FLOOR
4" POLYURETHANE INSULATION
4" GRAVEL (SEE STRUCTURAL FOR REINFORCING)

9-8 TYPICAL BASEMENT WALL -
R-6 INSULATION BOARD, LOCATED AT THE UPPER 4'-0"
(AT THOSE AREAS THAT ARE ADJACENT TO THE EXTERIOR)
12" CMU (SEE STRUCTURAL FOR REINFORCING)
DRAINAGE BOARD LEADING TO GRAVEL AND DRAIN TILE

9-9 TYPICAL FOUNDATION DRAIN -
4" DRAIN TO DAYLIGHT
SET IN GRAVEL
COVERED WITH FILTER FABRIC



LONGITUDINAL SECTION LOOKING EAST
SCALE: 3/16" = 1'-0"
0 3' 4' 8' 12'



LONGITUDINAL SECTION LOOKING WEST
SCALE: 3/16" = 1'-0"
0 3' 4' 8' 12'