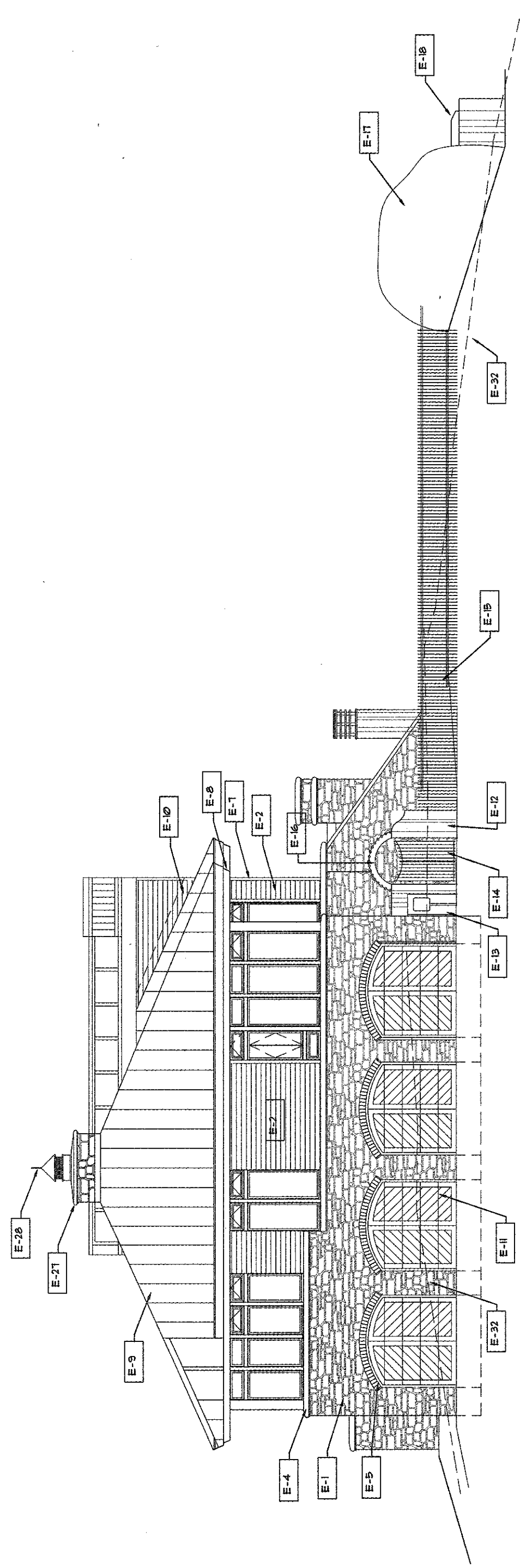
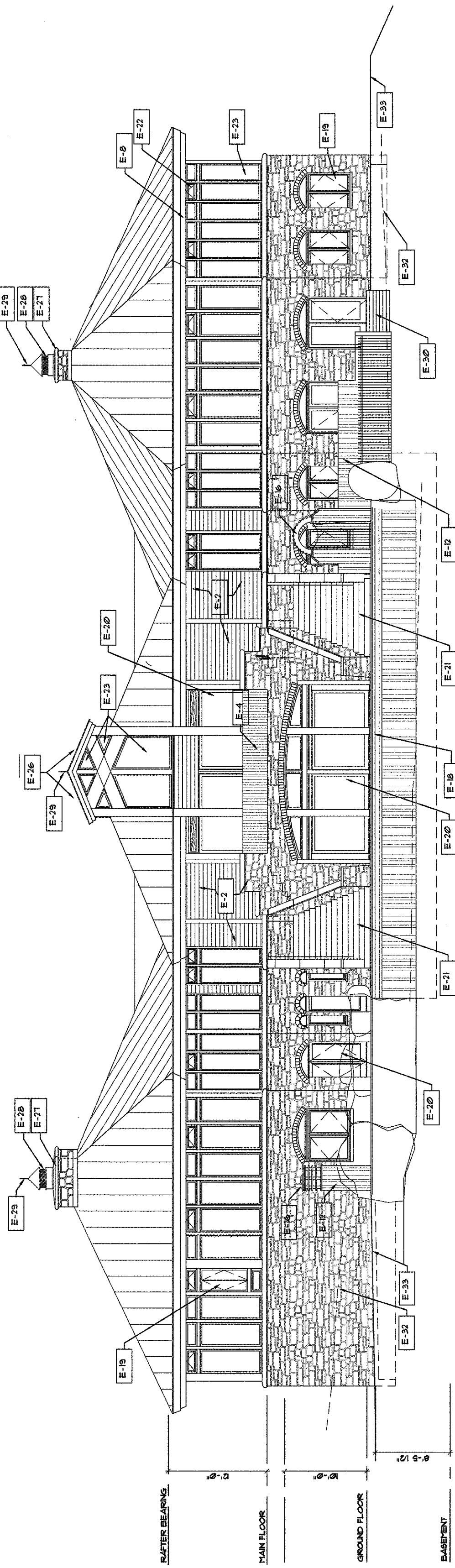


**ELEVATION KEY NOTES:**

- E-1 FIELD STONE (USE STONES FROM THE SITE)
- E-2 CEDAR LAP SIDING
- E-3 CEDAR PANELS
- E-4 STONE CAP
- E-5 BRICK ARCH
- E-6 BRICK TRIM
- E-7 1" X DOUGLAS FIR TRIM
- E-8 FASCIA (DOUGLAS FIR)
- E-9 PRE-FINISHED METAL ROOF (RIB SPACING 16" O.C.)
- E-10 COPPER FLASHING
- E-11 WOOD GARAGE DOORS WITH GLASS INSERTS AND NATURAL COGNAC FINISH
- E-12 CONCRETE WALL (POINT TO HAVE VERTICAL WOOD PATTERN)
- E-13 RECESSED IN CONCRETE WALL FOR ELECTRIC METER
- E-14 IRON GATE TO MEET CODE REQUIREMENTS FOR POOL SAFETY
- E-15 IRON FENCE TO MEET CODE REQUIREMENTS FOR POOL SAFETY
- E-16 TRELLIS OVER POOL GATE
- E-17 LARGE BUILDERS TAKEN FROM SITE FOR CONSTRUCTION OF WATERFALL
- E-18 INFINITY EDGE (HEIGHT ABOVE GRADE TO MEET THE CODE REQUIREMENTS FOR POOL SAFETY)
- E-19 CASHERMENT WINDOW WITH CEDAR WOOD ARCHED PANEL ABOVE
- E-20 POCKET SLIDING GLASS DOORS BY PLAZA DOORS
- E-21 EXTERIOR STAIRS WITH PRE-CAST TREADS AND BRICK RISERS
- E-22 AWNING WINDOW WITH SCREEN
- E-23 FIXED GLASS (INSULATED GLASS)
- E-24 6/688 WOOD FRAME GLASS SLIDING DOORS WITH SLIDING SCREENS
- E-25
- E-26 SKYLIGHT
- E-27 CEMENT CHIMNEY CAP
- E-28 FLUE WITH BIRD SCREEN AND RAIN CAP
- E-29 LIGHTNING ROD
- E-30 NATURAL STONE STEPS
- E-31 LANDSCAPE BANK WITH GROUND COVER N.C.
- E-32 EXISTING GRADE LINES
- E-33 FINISH GRADE IS 6" BELOW FLOOR ELEVATION AT DOORS
- E-34 DIRECT VENTS FROM MECHANICAL, MIN. 2'-0" SEPARATION VENTS WITH STONE ARCH
- E-35 RAMP AT ENTRY
- E-36 TERRACE SLOPE AT 7%
- E-37 BANK 2 TO 1 SLOPE PLANTED IN GROUND COVER
- E-38 SIDEWALK TO MATCH POOL TERRACE MATERIAL
- E-39 10'-0" HIGH FRENCH DOORS



**NORTH-SIDE ELEVATION**  
SCALE: 3/16" = 1'-0"



**WEST-REAR ELEVATION**  
SCALE: 3/16" = 1'-0"

CONSTRUCTION SET 1  
CONSTRUCTION SET 2  
CONSTRUCTION SET 3

DATE: 10/13/2004  
PROJECT: 03/01/2004  
DRAWING: 10/13/2004  
SCALE: 3/16" = 1'-0"